

# IVANHOE SCHOOL



## YEAR 9 GCSE OPTIONS EVENING

*Thriving together*

# WHAT IS OUR AIM?

## Thriving Together

Everything you do in school  
– academic, social, wellbeing  
– helps to develop you as a  
person.

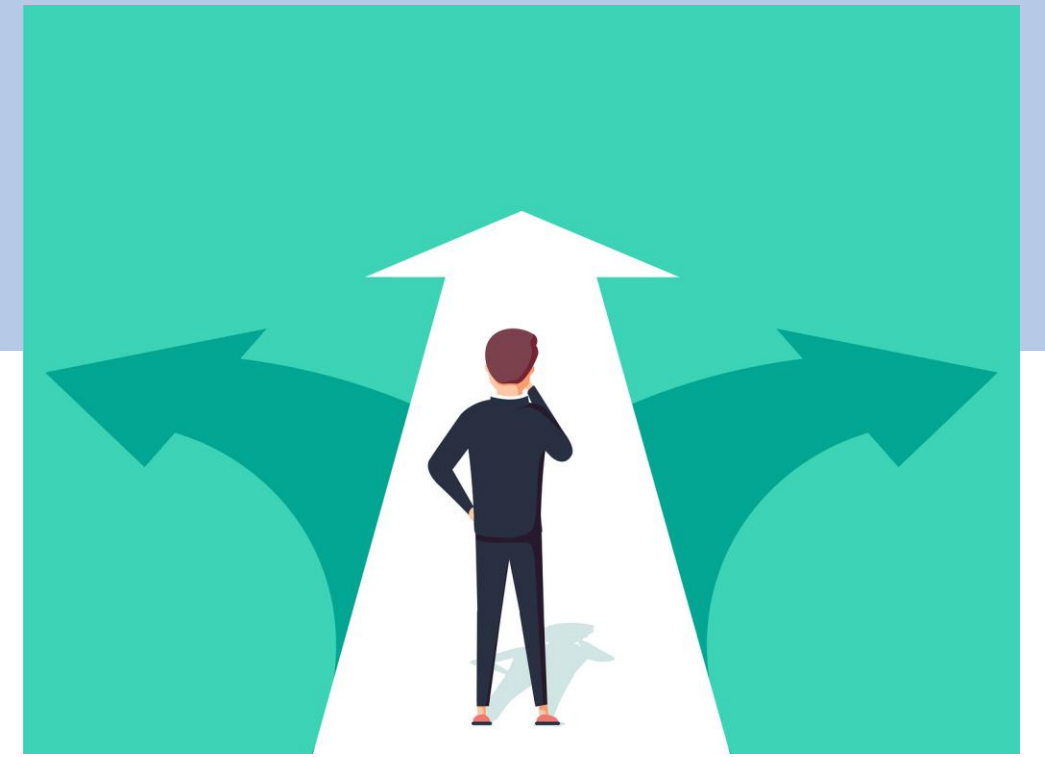
# IVANHOE WAY

*With the right attitude  
Attending every day  
I will achieve*



*Thriving together*

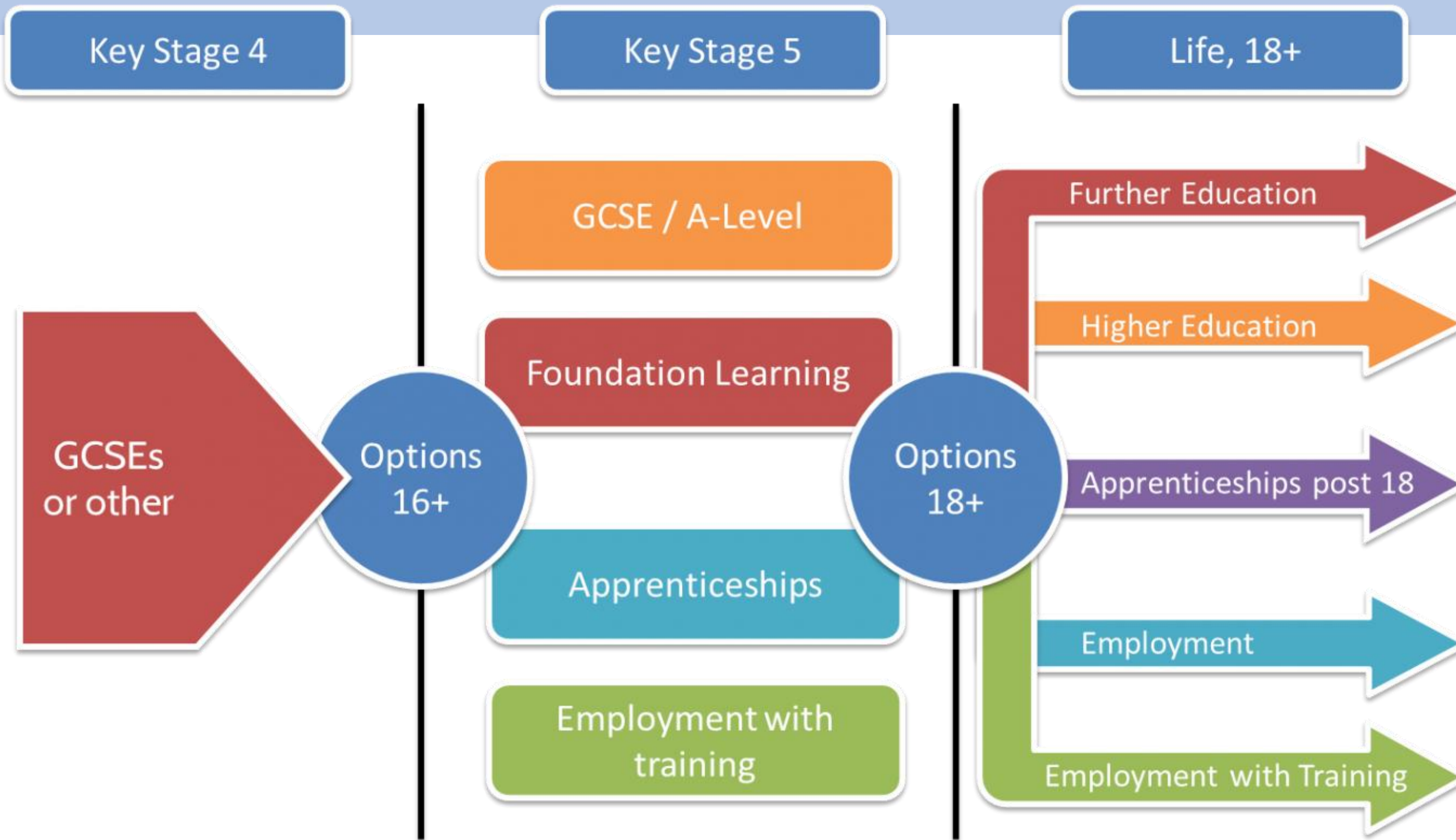
# BIG DECISIONS, BIG CHANGES



- ☑ December: Sit mid year assessments
- ☑ December: Give us your first thoughts about what you want to study in Year 10
- ☑ January: Go through assessment grades, get your reports.
- ☑ **14th January: Attend options evening**
- ☐ THINK – do your grades (effort and attainment!) match up with what you want to do? If not – discuss with teachers, parents, trusted adults
- ☐ **20<sup>th</sup> January: Parents evening**
- ☐ **15th – 22nd January: Make final option choices**



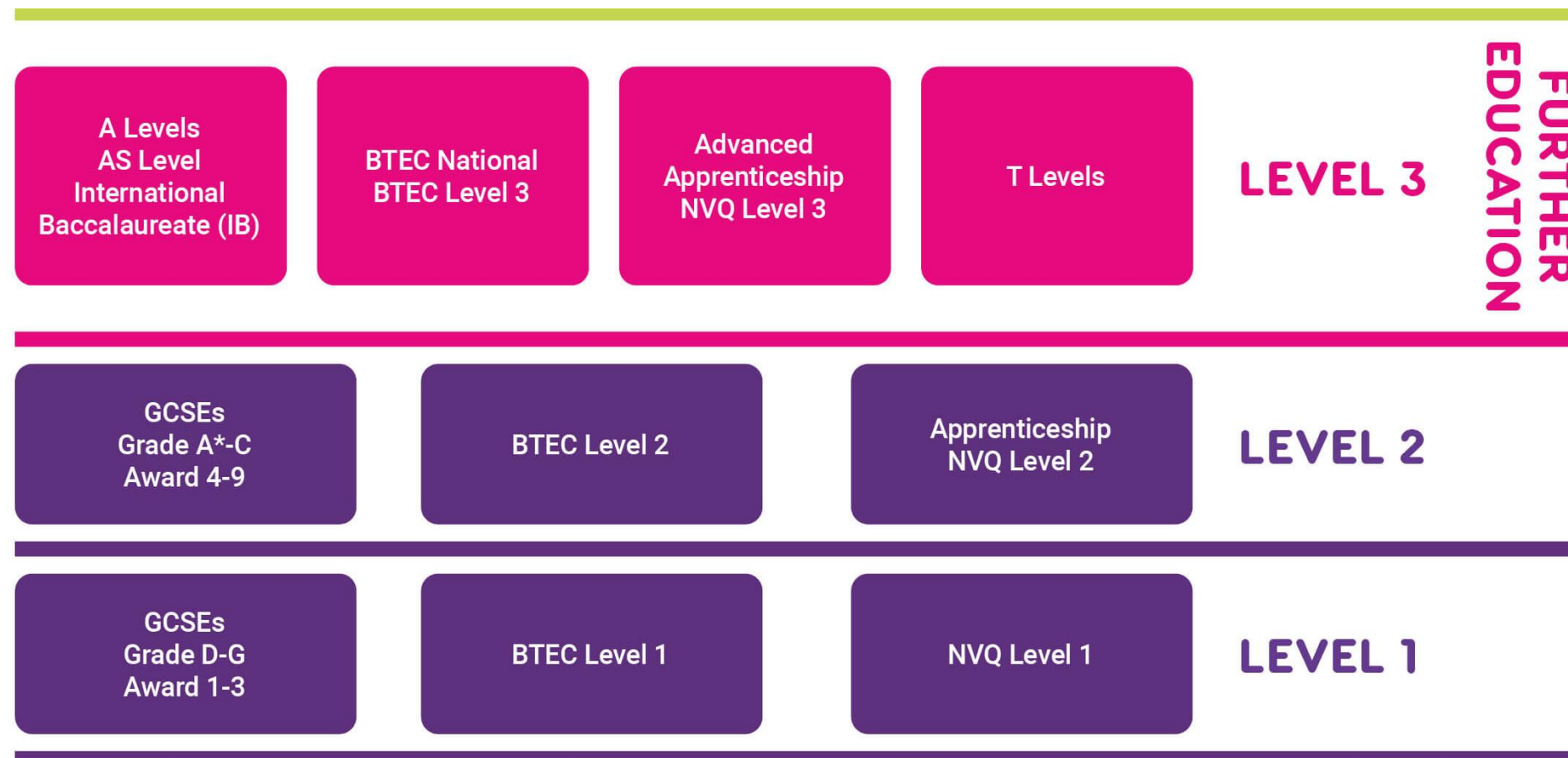
# Why do your option choices matter?



# LEVEL 2 COURSES



## LEVEL 2



- All level 2 courses – same level of difficulty
- Different types of assessment (Exam, NEA, or a mixture)
- GCSE grade 4 is a level 2 pass
- Grades 1, 2, 3 would be a level 1 pass
- To progress to level 3 courses, you need to pass at Level 2

If you do not achieve **Grade 4 English and Maths** in Year 11 you will need to keep re-sitting until you are 19 alongside whatever you are doing.

# UNDERSTANDING GCSE GRADES

**GCSE GRADES:** In 2017 GCSE grades changed from a letter system to a number grading.

In this system, GRADE 9 is the highest, and is worth slightly above the old A\*. Grades at 5 or above are known as a 'Strong Pass' and 4 or above are known as a 'Standard Pass'

New grades
9
8
7
6
5 Strong Pass
4 Standard Pass
3
2
1
U

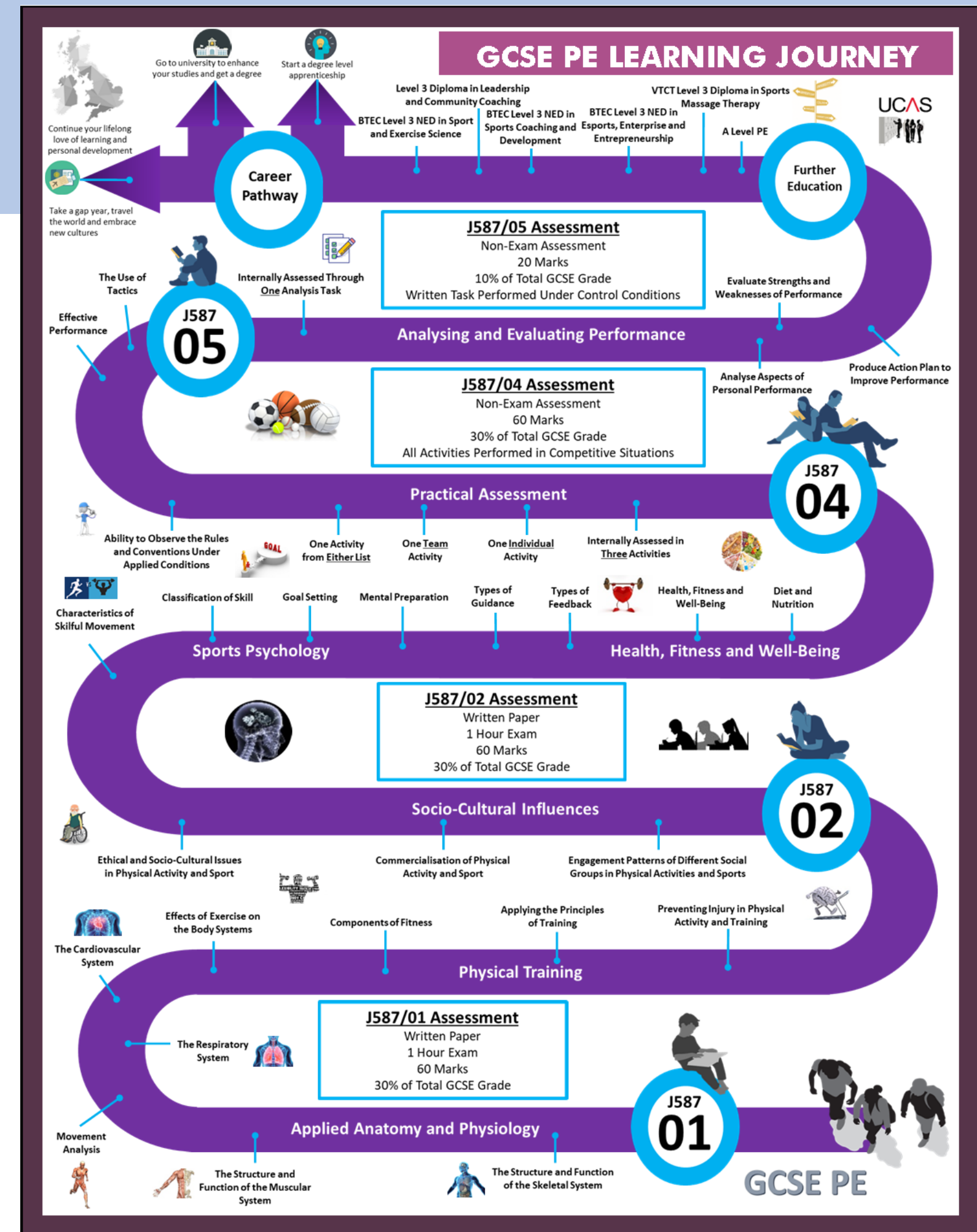


# HOW DO WE HELP YOU LEARN?

GCSE Subjects each have a Specification that is set by an Exam Board. This tells teachers what a child should know, and will be tested on, at the end of year 11.

Most subjects at Ivanhoe use a '**Spiral Curriculum**' and regular **retrieval practice**. This means you will come back to topics over and over again, each time with a little more depth. Science shows this helps with memory.

**Classwork, homework, coursework and practical work** all form part of the strategy to help you remember as much information as possible.



### WHY IS 95% ATTENDANCE NOT GOOD ENOUGH?

95% = **10**  
DAYS MISSED

OR

**50** HOURS OF  
LOST LEARNING

- **71%** of Ivanhoe students with **over 96%** attendance gained their basic qualification last year  
Compared to only
- **36%** of students with **less than 96%** gaining the basics qualification

**If you're not here you're not learning**



# HOW WILL YOUR PATH LOOK?

Education should prepare young people for jobs that do not yet exist, using technologies that have not yet been invented, to solve problems of which we are not yet aware

Richard Riley

BiotechPatentLawyer  
RenewableEnergyTechnician  
AugmentedRealityDeveloper  
MedicalRoboticsEngineer DroneOperator DigitalDetoxConsultant  
WearableTechSpecialist CloudComputingEngineer  
EthicsOfficer DataScientist E-sportsPlayer  
UX/UIDesigner SocialMediaManager NutrigenomicsCounselor  
GenomicDataAnalyst AppDeveloper SmartHomeTechnician  
DataPrivacyOfficer CybersecuritySpecialist  
DigitalMarketingAnalyst ProstheticsTechnician  
SustainabilityConsultant  
TelehealthCoordinator  
RemotePatientMonitoringTechnician

# IT'S EASY TO FEEL THE PRESSURE BUT...



What matters most is choosing subjects that match your interests, strengths, and ambitions as they are now, to give you the best chance of being successful.

# HOW DO I MAKE MY CHOICES?

You'll be sent a link to an online form which takes you through the process.

You'll need to give us 6 choices – you will get 4 of them.

Think carefully – you will need to commit to your choices. There is a very limited window to change at the start of Year 10.

Welcome Mel Konig

## Ivanhoe School KS4 Options Website For Entry in August 2026

In order to help us identify the subjects, blocks and therefore curriculum for your Year 10 and Year 11 studies starting in September 2026, we would like to know more about your subject preferences. We expect you to be able to study 4 options subjects in addition to your Core subjects

---

### Subject 1 & 2

Select **two** subjects from **different** colours

French (GCSE)	Spanish (GCSE)	Geography (GCSE)	History (GCSE)	Art (GCSE)	Ceramics (GCSE)
Computing (GCSE)	Drama (GCSE)	Food (GCSE)	Graphics (GCSE)	Music (BTEC)	Photography (GCSE)
Resistant Materials (GCSE)	Textiles (GCSE)				



# FULL LIST OF SUBJECTS OFFERED

- GCSE Geography
- GCSE History
- GCSE French **(if studied in Y9)**
- GCSE Spanish **(if studied in Y9)**
- GCSE Triple Science **(by agreement with Head of Science – please tick box on the option form)**
- BTEC Music
- BTEC Drama
- GCSE Sociology
- GCSE Computer Science
- CNAT IT
- CNAT Enterprise and Marketing
- CNAT Health and Social Care
- GCSE Food and Nutrition

The following groups of subjects cannot be chosen together, but can be selected with any other combination (e.g. you cannot choose **Art, Ceramics**, Geography and Graphics – but you could choose Art, Graphics, Geography and History)

## CANNOT BE STUDIED TOGETHER

- GCSE Art
- GCSE Ceramics
- GCSE Photography

## CANNOT BE STUDIED TOGETHER

- GCSE PE
- CNAT Sports Studies

## CANNOT BE STUDIED TOGETHER

- GCSE Design and Technology: Graphics
- GCSE Design and Technology: Timbers

# ASSESSMENT METHODS

Key Stage 4 courses are generally assessed using the following methods:

**GCSE Subjects**– Most GCSEs follow the **EXAMINATION ONLY** route. Students will sit one or more exam papers at the end of Year 11 which contribute to 100% of the grade.

**CNAT and BTEC subjects** – CNAT and BTEC subjects often have both an **exam**, and an **NEA** component.

An **NEA (Non-Examined Assessment)** is a ‘coursework’ unit which is set and completed in class, assessed by the teacher, and then moderated by the exam board. There are strict rules around NEA’s and teachers have to follow clear guidelines around how they support students.

NEA’s are good in that they mean that students have some marks ‘in the bag’ before the end of the course. However they require focused, independent work for an extended period of lesson times.

**Teachers of each subject can tell you more about the assessment method for the subjects in their department.**

# TRIPLE SCIENCE, AND NEW COURSES FOR THIS YEAR

## Triple Science

Triple Science allows you to study Biology, Chemistry, and Physics separately to earn 3 GCSEs.

Places are very limited and you must have spoken to your Science teacher and/or Miss Neeson about your suitability for this course.



## Sociology

We are pleased to offer GCSE Sociology as a new course for this year. Sociology helps you understand how society works, why people behave the way they do, and how different groups experience the world.





# TRIPLE SCIENCE, AND NEW COURSES FOR THIS YEAR

## **GCSE Photography**

GCSE Photography teaches you to express yourself creatively through images, develop your technical skills, and explore the world through a lens. Photography is part of the Art and Design course – you will not be able to study Photography AND Art or Ceramics



## **CNAT Health and Social Care**

CNAT Health and Social Care gives you the foundation for a career in caring, covering everything from human development to tackling health inequalities.



## Do

- Do choose subjects which you like or enjoy.
- Do choose subjects at which you are successful.
- Do choose subjects which you may need for a career or further education.
- Do find out everything that you can about the subject before you choose it. Once you have started a subject we expect you to stick with it for the full two years.
- Do talk to the people who know you best.
- Do listen to the advice your subject teachers give you.



## Don't

- Don't choose a subject just because your friend has chosen it, friendships may change with time but your GCSE grades will remain with you forever.
- Don't choose a subject just because you like, or dislike a particular teacher. They may not end up teaching you!

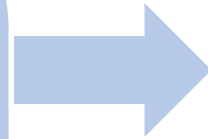




# TIMELINES

## 14<sup>th</sup> – 21<sup>st</sup> January

- Talk to your parents
- Talk to your teachers
- Think about what has really interested you over the last few years
- Look to your future – what do you want to do after Year 11?
- Read your report and look at your strengths and areas for development
- Prepare any questions for parents evening



## Before 22<sup>nd</sup> January

- Log on to the link we send you and make your choices.
- There is no benefit to making choices early – but missing the deadline makes you less likely to get what you want.

We offer a broad range of subjects and offer more choice than many schools. We try our best to give everyone their first choices but this is not always possible. We need to make sure that class sizes are suitable to allow a subject to run, and that we have the expertise and facilities to offer consistency over two years.

In the event that we have to change our subject offer, affected students will be notified.



# TIME TO TALK TO THE EXPERTS

We have representatives here tonight from all of our options subject areas.

Please chat to them to find out more about the subjects you are considering. Remember things are not exactly the same as they have been at Key Stage 3, so do your research!

Afterwards, starting at 6pm – Mrs Lane will be in SH1 for the Duke of Edinburgh Award information session

